

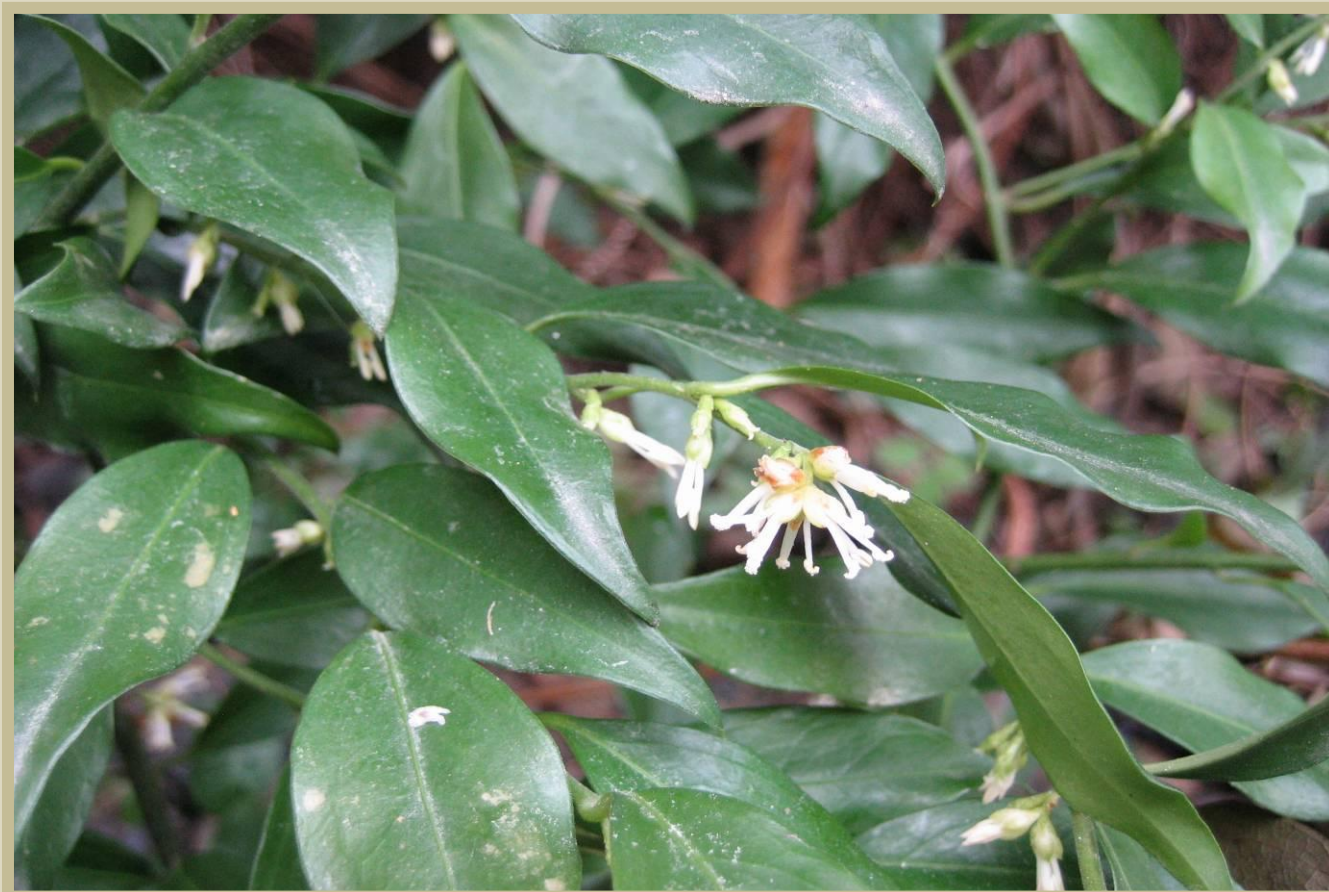
Arboretum Mlyňany

Slovak Academy of Sciences



Index Seminum

59/2011



Sarcococca ruscifolia Stapf

Species from the title page:

***Sarcococca ruscifolia* Stapf**

Family: *Buxaceae*

Synonyms: *Sarcococca saligna* var. *chinensis* Franch.,
Sarcococca ruscifolia var. *chinensis* (Franch.) Rehder & E. H. Wilson
Sarcococca pauciflora C. Y. Wu ex S. Y. Bao

Common names: Fragrant Sweet Box, Christmas box

Fragrant Sweet Box is a small, evergreen shrub with small, fragrant, creamy-white flowers and dark red berries. It is native to Central China (Gansu, Guangxi, Guizhou, Hubei, Hunan, Shanxi, Sichuan, C., N.W., and S.E. Yunnan provinces), where it grows in the woody slopes, on calcareous rocks or along the banks of rivers, between 200 and 2.600 m of altitude.

The genus name is the combination of two Greek words "sarx" (a flesh of fruit) and "kokkos" (a berry, with reference to the fleshy fruits). The epithet is the combination of the name of the plant genus *Ruscus* and the word "folia" (a leaf, with reference to the resemblance of the leaves with those of the genus *Ruscus*).

S. ruscifolia is a slow growing evergreen densely ramified bushy shrub not taller than one metre with alternate simple leaves of a lucid dark green colour. The leaf blade is leathery, ovate or elliptic-lanceolate with sharp apex, 35-55 mm long and 10-25 mm broad. Flowers are unisexual cream-white and intensely perfumed in short racemes which appear in autumn-winter at the axil of the terminal leaves. The fruits are globose capsules of about 7-8 mm in diameter and dark red or black-brown colour, persisting on the plant for the whole winter.

The Fragrant Sweet Box is of great ornamental value due to its evergreen foliage, long-lasting winter blossoming with very fragrant, although inconspicuous, flowers. It can be utilized as under wood or edges in shade. It is best located near a path to take advantage of such mildly scented winter flowers.

In Mlyňany Arboretum SAS, there are several bushy groups of Fragrant Sweet Box (**No. 138** in our seed catalogue) growing in the shaded places near the arboretum's mansion house. It is in flower each year starting in January and continuing through February. Seeds are usually well developed.

Address

Arboretum Mlyňany SAS
Vieska nad Žitavou 178
951 52 Slepčany
SLOVAKIA
www.arboretum.sav.sk

Telephone: +421 (0) 376 334 211

Fax: +421 (0) 376 426 931

E-mail: arboretum.mlynany@savba.sk

Director

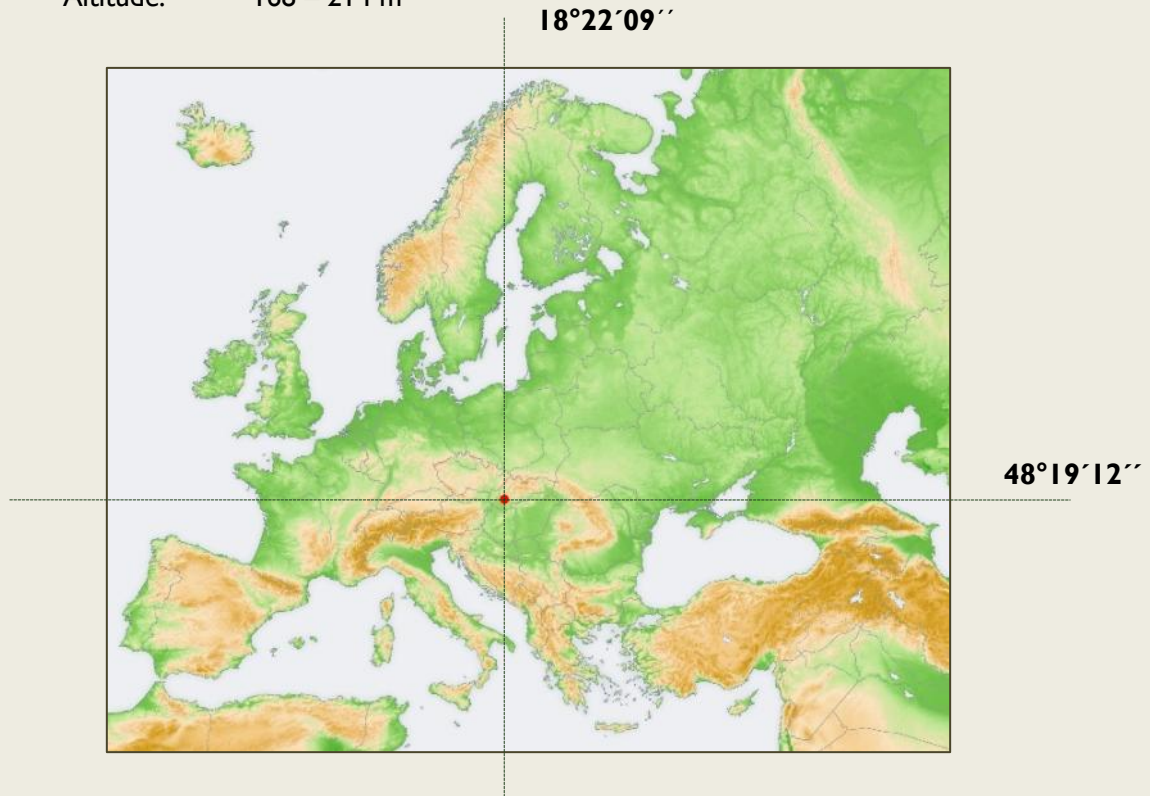
Peter Hot'ka (peter.hotka@savba.sk)

Seed collectors

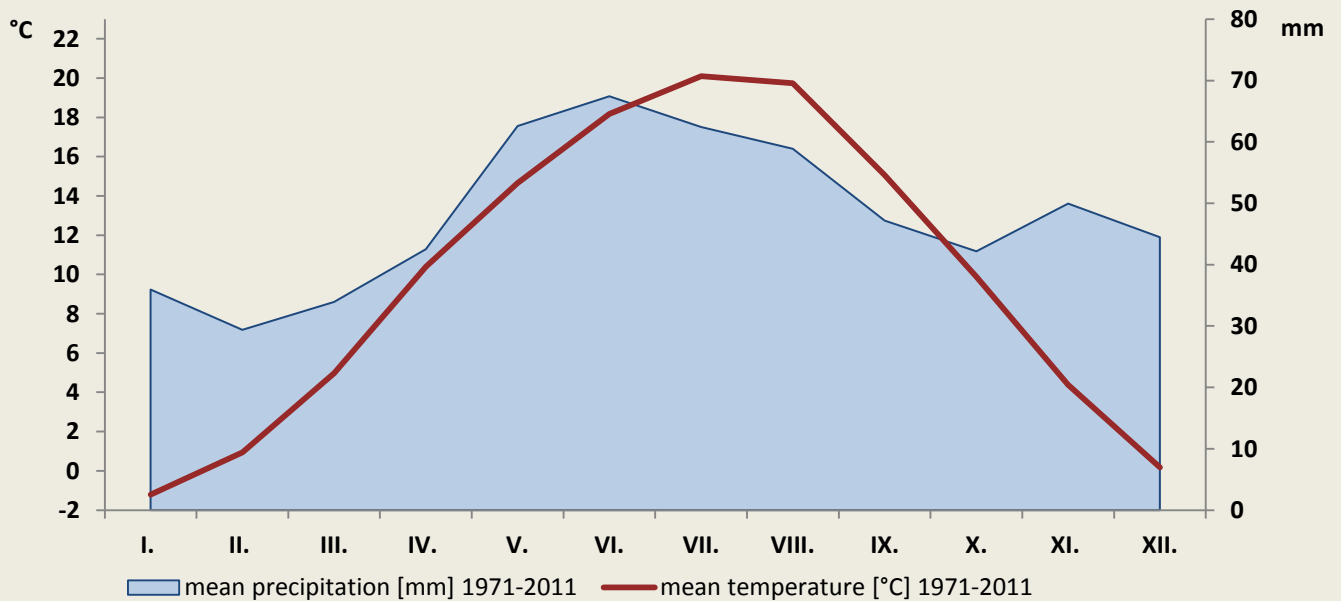
Peter Hot'ka

Tomáš Bibeň (tomas.biben@savba.sk)

Location: Latitude: 48°19'12" N
 Longitude: 18°22'09" E
 Altitude: 168 – 214 m



Climatic data (1971-2011): Annual mean temperature: 9.77°C, Annual mean precipitation: 577.03 mm



Climatic data (2011):

Annual mean temperature: 10.44°C; Total annual precipitation: 436.80 mm

2011	I.	II.	III.	IV.	V.	VI.	VII.	VIII.	IX.	X.	XI.	XII.
mean temperature [°C]	-0.7	-0.5	6.3	13.5	15.5	19.0	19.1	20.7	17.9	9.8	3.0	1.9
total precipitation [mm]	19.6	8.3	37.8	15.4	30.7	90.2	116.8	49.0	18.0	21.4	0	29.6

In response to the **Convention on Biological Diversity (Rio de Janeiro, 1992)**
Arboretum Mlyňany SAS supplies its seeds offered in this catalogue on the following conditions:

1. the seeds are only used for the public good in areas of scientific research, conservation of species, education and the development of public botanic gardens,
2. any commercial use of the plant material requires the permission of Arboretum Mlyňany SAS and a separate agreement,
3. any publication resulting from the use of the material should acknowledge Arboretum Mlyňany SAS as supplier.

By ordering seeds you agree to comply with the conditions above.



Desiderata 2010, max. 50

Vaše požiadavky nám prosím zašlite do 30. apríla 2012.
Please return Desiderata before 30 April 2012.
Desiderata senden Sie bitte bis spätestens 30. April 2012 zurück.

Desiderata address to:

**Tomáš Bibeň
Arboretum Mlyňany SAS
Vieska nad Žitavou 178,
951 52 Slepčany,
SLOVAKIA**

or

tomas.biben@savba.sk

Your address:

--

Aceraceae

1. *Acer buergerianum* Miq.
2. *Acer cappadocicum* Gled.
3. *Acer cissifolium* Sieb. & Zucc.
4. *Acer davidii* Franch.
5. *Acer divergens* C.Koch & Pax ex Pax
6. *Acer ginnala* Maxim.
7. *Acer glabrum* Torr.
8. *Acer griseum* /Franch./ Pax
9. *Acer grosseri* Pax
10. *Acer grosseri* Pax var. *hersii* /Rehd./ Rehd.
11. *Acer japonicum* Thunb.
12. *Acer japonicum* Thunb. 'Aconitifolium'
13. *Acer lobelii* Ten.
14. *Acer miyabei* Maxim.
15. *Acer mono* Maxim.
16. *Acer monspessulanum* L.
17. *Acer opalus* Mill.
18. *Acer opalus* Mill. subsp. *obtusatum* /Waldst. & Kit. ex Willd./ Gams
19. *Acer palatum* Thunb. 'Brevilobum'
20. *Acer palmatum* Thunb.
21. *Acer palmatum* Thunb. 'Dissectum'
22. *Acer palmatum* Thunb. 'Linearilobum'
23. *Acer platanoides* L. 'Lorbergii'
24. *Acer pseudosieboldianum* /Pax/ Komar.
25. *Acer robustum* Pax
26. *Acer rufinerve* Sieb. & Zucc.
27. *Acer semenovii* Regel & Herd.
28. *Acer tataricum* L.
29. *Acer tataricum* L. subsp. *aidzuense* /Franch./ P. C. DeJong
30. *Acer tegmentosum* Maxim.
31. *Acer truncatum* Bge.
32. *Acer tschonoskii* Maxim. var. *rubripes* Komar.
33. *Acer ukurunduense* Trautv. & Mey.
34. *Acer* × *zoeschense* Pax
35. *Dipteronia sinensis* Oliv.

Actinidiaceae

36. *Actinidia arguta* /Sieb. & Zucc./ Miq.
37. *Actinidia kolomikta* /Maxim. & Rupr./ Maxim.

Adoxaceae

38. *Viburnum betulifolium* Batal.
39. *Viburnum bitchuense* Makino
40. *Viburnum burejaeticum* Regel & Herd.
41. *Viburnum* × *burkwoodii* Burkwood & Skipw.
42. *Viburnum carlesii* Hemsl.
43. *Viburnum cassinoides* L.
44. *Viburnum dasyanthum* Rehd.
45. *Viburnum dilatatum* Thunb.
46. *Viburnum farreri* Stearn
47. *Viburnum hupehense* Rehd.
48. *Viburnum lantana* L.
49. *Viburnum opulus* L.
50. *Viburnum plicatum* Thunb. var. *tomentosum* /Thunb./ Miq.
51. *Viburnum* × *rhytidophylloides* Suring.
52. *Viburnum rhytidophyllum* Hemsl.
53. *Viburnum sargentii* Koehne
54. *Viburnum setigerum* Hance

Altingiaceae

55. *Liquidambar styraciflua* L.

Anacardiaceae

56. *Cotinus coggygria* Scop.
57. *Rhus glabra* L.
58. *Rhus potaninii* Maxim.

59. *Rhus* × *pulvinata* Greene
60. *Rhus radicans* L.
61. *Rhus typhina* L.
62. *Rhus verniciflua* Stokes

Aquifoliaceae

63. *Ilex aquifolium* L.
64. *Ilex aquifolium* L. f. *bacciflava* /Weston/ Rehd.
65. *Ilex aquifolium* L. 'Ferox'
66. *Ilex aquifolium* L. f. *heterophylla* /Aiton/ Loes.
67. *Ilex* × *aquipernyi* Gable ex Whittem.
68. *Ilex ciliospinosa* Loes.
69. *Ilex latifolia* Thunb.
70. *Ilex pernyi* Franch.
71. *Ilex verticillata* /L./ A. Gray

Araliaceae

72. *Acanthopanax divaricatus* /Sieb. & Zucc./ Seem.
73. *Acanthopanax senticosus* /Rupr. & Maxim./ Harms
74. *Acanthopanax setchuenensis* Harms ex Diels
75. *Kalopanax pictus* /Thunb./ Nakai.

Berberidaceae

76. *Berberis aggregata* Schneid.
77. *Berberis amurensis* Rupr.
78. *Berberis amurensis* Rupr. var. *japonica* /Reg./ Rehd.
79. *Berberis canadensis* Mill.
80. *Berberis chinensis* Poir.
81. *Berberis coxii* Schneid.
82. *Berberis francisci-ferdinandi* Schneid.
83. *Berberis gagnepainii* Schneid.
84. *Berberis hookeri* Lem.
85. *Berberis* × *interposita* Ahrendt
86. *Berberis julianae* Schneid.
87. *Berberis koreana* Palibin
88. *Berberis oblonga* Schneid.
89. *Berberis sieboldii* Miq.
90. *Berberis* × *stenophylla* Lindl.
91. *Berberis thunbergii* DC.
92. *Berberis thunbergii* var. *maximowiczii* /Reg./ Reg.
93. *Berberis verna* Schneid.
94. *Berberis vulgaris* L.
95. *Berberis vulgaris* L. 'Atropurpurea'
96. *Berberis wilsoniae* Hemsl.
97. *Berberis yunnanensis* Franch.
98. *Mahonia aquifolium* /Pursh./ Nutt.
99. *Mahonia bealei* /Fort./ Carr.
100. *Mahonia repens* /Lindl./ G. Don.

Betulaceae

101. *Betula alleghaniensis* Britt.
102. *Betula davurica* Pall.
103. *Betula ermanii* Cham.
104. *Betula ermanii* Cham. var. *subcordata* /Reg./ Koidz.
105. *Betula glandulifera* /Reg./ Butler.
106. *Betula maximowicziana* Reg.
107. *Betula obscura* Kotula ex Fiek
108. *Betula pendula* Roth.
109. *Betula pendula* Roth. 'Fastigiata'
110. *Betula pendula* Roth. 'Youngii'
111. *Betula platyphylla* Sukatchev
112. *Betula platyphylla* Sukatchev var. *szechuanica* /Schneid./
113. *Betula populifolia* Marshall
114. *Betula pubescens* Ehrh.
115. *Betula raddeana* Trautv.
116. *Betula schmidtii* Regel
117. *Betula utilis* D. Don 'Golden Cloud'
118. *Betula utilis* D. Don var. *jacquemontii* /Spach/ H. J. P. Winkl.

- 119. *Carpinus betulus* L.
- 120. *Carpinus betulus* L. 'Fastigiata'
- 121. *Carpinus betulus* L. 'Quercifolia'
- 122. *Carpinus caucasica* Grossh.
- 123. *Carpinus cordata* Blume
- 124. *Carpinus orientalis* Mill.
- 125. *Carpinus turczaninowii* Hance
- 126. *Corylus colurna* L.
- 127. *Ostrya carpinifolia* Scop.
- 128. *Ostrya japonica* Sarg.
- 129. *Ostrya virginiana* /Mill./ K. Koch

Bignoniaceae

- 130. *Catalpa bignonioides* Walt.
- 131. *Catalpa ovata* G. Don.
- 132. *Catalpa speciosa* /Warder/ Engelm.
- 133. *Catalpa* × *erubescens* Carr. nothovar. *japonica* /Dode/ Pact

Buddleiaceae

- 134. *Buddleia lindleyana* Fortune

Buxaceae

- 135. *Buxus microphylla* Sieb. & Zucc. var. *koreana* Nakai
- 136. *Buxus microphylla* Sieb. & Zucc. var. *sinica* Rehd. & Wils.
- 137. *Buxus sempervirens* L. 'Angustifolia'
- 138. *Sarcococca ruscifolia* Stapf

Calycanthaceae

- 139. *Chimonanthus praecox* /L./ Link.

Cannabaceae

- 140. *Celtis caucasica* Willd.
- 141. *Celtis jessoensis* Koidz.
- 142. *Celtis sinensis* var. *japonica* /Planch./ Nakai

Caprifoliaceae

- 143. *Abelia biflora* Turcz.
- 144. *Abelia* × *grandiflora* /André/ Rehd.
- 145. *Diervilla lonicera* Mill.
- 146. *Diervilla rivularis* Gatt.
- 147. *Diervilla* × *splendens* /Carr./ G. Kirchn.
- 148. *Kolkwitzia amabilis* Graebn.
- 149. *Lonicera alpigena* L.
- 150. *Lonicera alpigena* L. 'Nana'
- 151. *Lonicera* × *bella* Zabel
- 152. *Lonicera coerulea* L.
- 153. *Lonicera coerulea* L. var. *altaica* Pall.
- 154. *Lonicera coerulea* L. var. *edulis* Regel
- 155. *Lonicera caucasica* Pall.
- 156. *Lonicera ferdinandi* Franch.
- 157. *Lonicera fragrantissima* Lindl. & Paxton
- 158. *Lonicera henryi* Hemsl.
- 159. *Lonicera chrysantha* Turcz. ex Ledeb.
- 160. *Lonicera iberica* M. Bieb.
- 161. *Lonicera japonica* Thunb.
- 162. *Lonicera maackii* /Rupr./ Maxim.
- 163. *Lonicera maximowiczii* /Rupr. ex Maxim./ Maxim.
- 164. *Lonicera nigra* L.
- 165. *Lonicera orientalis* Lam.
- 166. *Lonicera pileata* Oliv.
- 167. *Lonicera quinquelocularis* Hardw.
- 168. *Lonicera ruprechtiana* Reg.
- 169. *Lonicera tatarica* L.
- 170. *Lonicera tatarica* L. f. *xanthocarpa* Hort.
- 171. *Lonicera tenuipes* Nakai
- 172. *Sambucus nigra* L. 'Laciniata'
- 173. *Symphoricarpos* × *chenaultii* 'Mother of Pearl'

Celastraceae

- 174. *Celastrus angulatus* Maxim.
- 175. *Celastrus orbiculatus* Thunb.
- 176. *Euonymus bungeanus* Maxim.
- 177. *Euonymus fortunei* /Turcz./ Hand.-Maz. var. *radicans* /Sieb. ex Miq./ Rehd.
- 178. *Euonymus grandiflorus* Wall.
- 179. *Euonymus hamiltonianus* Wall. var. *hians* /Koehne/ Blakel.
- 180. *Euonymus hamiltonianus* Wall. var. *lanceifolius* /Loes./ Blakel.
- 181. *Euonymus hamiltonianus* Wall. var. *maackii* /Rupr./ Kom.
- 182. *Euonymus hamiltonianus* var. *semiexsertus* /Koehne/ Blakel.
- 183. *Euonymus hamiltonianus* Wall. var. *yedoensis* /Koehne/ Blakel.
- 184. *Euonymus hamiltonianus* Wall. var. *yedoensis* /Koehne/ Blakel. f. *koehneanus*
- 185. *Euonymus europaeus* L.
- 186. *Euonymus latifolius* /L./ Mill.

Cercidiphyllaceae

- 187. *Cercidiphyllum japonicum* Sieb. & Zucc.

Cistaceae

- 188. *Cistus laurifolius* L.

Clusiaceae

- 189. *Hypericum* × *inodorum* Mill.
- 190. *Hypericum* × *mooserianum* André

Cornaceae

- 191. *Cornus amomum* Mill.
- 192. *Cornus australis* C. A. Mey.
- 193. *Cornus baileyi* Coult. & Evans
- 194. *Cornus controversa* Hemsl.
- 195. *Cornus coreana* Wagner
- 196. *Cornus kousa* /Buerg./Hance
- 197. *Cornus kousa* /Buerg./Hance var. *chinensis* Osborn
- 198. *Cornus macrophylla* Wall.
- 199. *Cornus officinalis* Sieb. & Zucc.
- 200. *Davidia involucrata* Baillon

Cupressaceae

- 201. *Cryptomeria japonica* /L.f./ D. Don
- 202. *Cunninghamia lanceolata* /Lamb./ Hook.
- 203. *Cupressus arizonica* Greene. 'Glaucia'
- 204. *Cupressus lusitanica* ssp. *benthamii* /Endl./ Franco
- 205. *Cupressus sempervirens* L.
- 206. *Chamaecyparis lawsoniana* /Murr./ Parl.
- 207. *Chamaecyparis lawsoniana* /Murr./ Parl. 'Aurea'
- 209. *Chamaecyparis lawsoniana* /Murr./ Parl. 'Erecta Viridis'
- 210. *Chamaecyparis lawsoniana* /Murr./ Parl. 'Globosa'
- 211. *Chamaecyparis lawsoniana* /Murr./ Parl. 'Golden Wonder'
- 212. *Chamaecyparis nootkatensis* /D. Don/ Spach.
- 213. *Chamaecyparis pisifera* /S. & Z./Endl.
- 214. *Juniperus communis* L.
- 215. *Juniperus chinensis* L.
- 216. *Juniperus chinensis* L. 'Keteleeri'
- 217. *Juniperus mongolica* Hort. ex Lavallée
- 218. *Juniperus occidentalis* Hook.
- 219. *Juniperus sabina* L.
- 220. *Juniperus scopulorum* Sarg. 'Skyrocket'
- 221. *Juniperus semiglobosa* Reg.
- 222. *Metasequoia glyptostroboides* Hu & W. C. Cheng
- 223. *Sequoiadendron giganteum* /Lindl./ J. Buchh.
- 224. *Thuja orientalis* L.
- 225. *Thuja orientalis* L. 'Sieboldii'
- 226. *Thuja plicata* J. Don ex D. Don
- 227. *Thuja plicata* J. Don ex D. Don 'Zebrina'

228. *Thujopsis dolabrata* /Thunb. ex L. f./ Sieb. & Zucc.

Ebenaceae

229. *Diospyros lotus* L.

Elaeagnaceae

230. *Elaeagnus multiflora* Thunb.

231. *Elaeagnus umbellata* Thunb.

Ericaceae

232. *Enkianthus campanulatus* /Miq./ G.Nicholson 'Albiflorus'

233. *Enkianthus perulatus* /Miq./ Schneid.

234. *Kalmia angustifolia* L.

235. *Kalmia latifolia* L.

236. *Ledum palustre* L.

237. *Oxydendrum arboreum* /L./ DC.

238. *Pieris floribunda* /Pursh/ Benth. & Hook.

239. *Pieris japonica* /Thunb./ D. Don

240. *Rhododendron augustinii* Hemsl.

241. *Rhododendron canadense* /L./ Torr.

242. *Rhododendron catawbiense* Michx.

243. *Rhododendron catawbiense* Michx. 'Album'

244. *Rhododendron caucasicum* Pall.

245. *Rhododendron fortunei* Lindl.

246. *Rhododendron* × hybridum 'Balalaika'

247. *Rhododendron* × hybridum 'Cunningham's White'

248. *Rhododendron* × hybridum 'Eva'

249. *Rhododendron* × hybridum 'Greta'

250. *Rhododendron* × hybridum 'Klondyke'

251. *Rhododendron* × hybridum 'Nova Zembla'

252. *Rhododendron* × hybridum 'Persil'

253. *Rhododendron* × hybridum 'Roseum'

254. *Rhododendron* × hybridum 'Rumba'

255. *Rhododendron* × hybridum 'Golden Sunset'

256. *Rhododendron* × hybridum 'Samba'

257. *Rhododendron* × hybridum 'Sylphides'

258. *Rhododendron kaempferi* Planch.

259. *Rhododendron lacteum* Franch.

260. *Rhododendron luteum* Sweet

261. *Rhododendron micranthum* Turcz.

262. *Rhododendron orbiculare* Decne.

263. *Rhododendron oreodoxa* Franch.

264. *Rhododendron ponticum* L.

265. *Rhododendron reticulatum* D. Don ex G. Don

266. *Rhododendron yedoense* Rehd. var. *poukhanense* Nakai

267. *Tripetaleia bracteata* Maxim.

268. *Vaccinium oldhamii* Miq.

Eucommiaceae

269. *Eucommia ulmoides* Oliv.

Euphorbiaceae

270. *Andrachne colchica* Fisch. & Mey.

271. *Securinega suffruticosa* /Pall./ Rehd.

Fabaceae

272. *Albizia julibrissin* Durazz.

273. *Albizia lophantha* Benth.

274. *Amorpha californica* Nutt.

275. *Caragana arborescens* Lam. 'Pendula'

276. *Caragana frutex* /L./K.Kochcelski

277. *Cercis canadensis* L.

278. *Cercis chinensis* Bge.

279. *Cercis siliquastrum* L.

280. *Colutea arborescens* L.

281. *Colutea orientalis* Mill.

282. *Coronilla emerus* /L./ Lassen.

283. *Cytisus scoparius* /L./ Link.

284. *Desmodium canadense* /L./ DC.

285. *Gleditsia caspica* Desf.

286. *Gleditsia japonica* Miq. var. *koraiensis* /Nakai/ Nakai

287. *Gleditsia sinensis* Lam.

288. *Gleditsia* × *texana* Sarg.

289. *Gleditsia triacanthos* L.

290. *Laburnum alpinum* /Mill./ Bercht. & J. Presl. 'Pendulum'

291. *Laburnum anagyroides* Medik.

292. *Lespedeza bicolor* Turcz.

293. *Lespedeza polystachya* Michx.

294. *Lespedeza thunbergii* (DC.) Nakai

295. *Maackia amurensis* Rupr. & Maxim.

296. *Robinia pseudoacacia* L.

297. *Sophora flavescens* Aiton.

298. *Sophora japonica* L.

299. *Wisteria sinensis* /Sims./ DC.

Grossulariaceae

300. *Ribes diacanthum* Pall.

301. *Ribes orientale* Desf.

Hamamelidaceae

302. *Hamamelis japonica* S. & Z.

303. *Hamamelis japonica* Sieb. & Zucc. var. *flavopurpurascens* /Makino/ Rehd.

304. *Hamamelis mollis* Oliv.

305. *Hamamelis virginiana* L.

Hydrangeaceae

306. *Deutzia gracilis* Sieb. & Zucc.

307. *Deutzia* × *rosea* /Lemoine/ Rehd.

308. *Deutzia schneideriana* Rehd.

309. *Hydrangea heteromalla* D. Don

310. *Hydrangea heteromalla* D. Don 'Bretschneideri'

311. *Hydrangea paniculata* Sieb.

312. *Hydrangea petiolaris* Sieb. & Zucc.

313. *Hydrangea sargentiana* Rehd.

314. *Hydrangea serrata* Ser.

315. *Philadelphus coronarius* L.

316. *Philadelphus delavayi* L. Henry

317. *Philadelphus* × *falconeri* Sarg.

318. *Philadelphus* × *lemoinei* Lemoine

319. *Philadelphus floridus* Beadle

320. *Philadelphus incanus* Koehne

321. *Philadelphus microphyllus* A. Gray

322. *Philadelphus pekinensis* Rupr.

323. *Philadelphus pekinensis* Rupr. var. *brachybotrys* /Koehne/ Koehne

324. *Philadelphus pubescens* Loisel.

325. *Philadelphus satsumanus* Miq. var. *nikoensis* Rehd.

326. *Philadelphus satsumi* Lindl. & Paxton

327. *Philadelphus sericanthus* Koehne

328. *Philadelphus schrenkii* Rupr.

329. *Philadelphus schrenkii* Rupr. var. *mandshuricus* /Maxim./ Kitagawa

330. *Philadelphus* × *splendens* Rehd.

331. *Philadelphus subcanus* Koehne

332. *Philadelphus tenuifolius* Rupr. & Maxim.

333. *Philadelphus tomentosus* Wall.

334. *Philadelphus* × *virginialis* Rehd.

Juglandaceae

335. *Carya cordiformis* /Wangh./K.Koch

336. *Juglans rupestris* Engelm. ex Torr.
 337. *Pterocarya fraxinifolia* /Lam./ Spach
 338. *Pterocarya rhoifolia* Sieb. & Zucc.
 339. *Pterocarya* × *rehderiana* Schneid.

Lamiaceae

340. *Vitex agnus-castus* L.
 341. *Vitex negundo* L.
 342. *Vitex negundo* L. var. *incisa* /Lam./ C. B. Clarke

Lardizabalaceae

343. *Akebia quinata* /Houtt./Decne.
 344. *Decaisnea fargesii* Franch.

Lauraceae

345. *Benzoin angustifolium* /W. C. Cheng/ Nakai

Magnoliaceae

346. *Liriodendron tulipifera* L.
 347. *Magnolia denudata* Desr.
 348. *Magnolia kobus* DC.
 349. *Magnolia salicifolia* /Sieb. & Zucc./ Maxim.
 350. *Magnolia* × *soulangeana* Soul. - Bod.
 351. *Magnolia tripetala* /L./L.
 352. *Magnolia virginiana* L.

Malvaceae

353. *Hibiscus syriacus* L.
 354. *Tilia americana* L.
 356. *Tilia dasystyla* Steven
 357. *Tilia japonica* /Miq./ Simonk.
 358. *Tilia mandshurica* Rupr. & Maxim.
 359. *Tilia mongolica* Maxim.
 360. *Tilia platyphyllos* Scop. 'Laciniata'

Moraceae

361. *Cudrania tricuspidata* /Carr./Bur.
 362. *Morus alba* L. 'Pendula'
 363. *Broussonetia papyrifera* /L./ L'Hér.

Oleaceae

364. *Fontanesia fortunei* Carr.
 365. *Forsythia europaea* Deg. & Bald.
 366. *Forsythia giraldiviana* Lingelsh.
 367. *Forsythia ovata* Nakai
 368. *Forsythia viridissima* Lindl.
 369. *Fraxinus longicuspis* Sieb. & Zucc.
 370. *Fraxinus ornus* L.
 371. *Fraxinus oxycarpa* M. Bieb. ex Willd.
 372. *Fraxinus potamophila* Herder
 373. *Fraxinus rhynchophylla* Hance
 374. *Jasminum fruticans* L.
 375. *Ligustrum amurense* Carr.
 376. *Ligustrum compactum* /Wall. ex G. Don/ Thomson ex Brandis
 377. *Ligustrum delavayanum* Hariot
 378. *Ligustrum ibota* Sieb.
 379. *Ligustrum obtusifolium* Sieb. & Zucc.
 380. *Ligustrum obtusifolium* Sieb. & Zucc. var. *regelianum* /Koehne/Rehd.
 381. *Ligustrum ovalifolium* Hassk.
 382. *Ligustrum quihoui* Carr.
 383. *Ligustrum sinense* Lour.
 384. *Ligustrum tschonoskii* Decne. var. *macrocarpum* /Koehne/ Rehd.
 385. *Ligustrum vulgare* L.
 386. *Ligustrum vulgare* L. 'Atrovirens'

387. *Ligustrum vulgare* L. 'Pyramidale'
 388. *Ligustrum vulgare* L. 'Xanthocarpum'
 389. *Phillyrea decora* Boiss. & Balansa
 390. *Syringa emodi* Wall.
 391. *Syringa fauriei* H. Lév.
 392. *Syringa josikaea* Jacq.
 393. *Syringa julianae* Schneid.
 394. *Syringa microphylla* Diels.
 395. *Syringa oblata* Lindl.
 396. *Syringa oblata* Lindl. 'Alba'
 397. *Syringa oblata* Lindl. subsp. *dilatata* /Nakai/ P. S. Green & M. C. Chang
 398. *Syringa pekinensis* Rupr.
 399. *Syringa pubescens* Turcz.
 400. *Syringa reticulata* /Blume/ H. Hara
 401. *Syringa sweginzowii* Koehne & Lingelsh.
 402. *Syringa tigerstedtii* H.Sm.
 403. *Syringa tomentella* Bur. & Franch.
 404. *Syringa villosa* Vahl.
 405. *Syringa wolfii* Schneid.
 406. *Syringa yunnanensis* Franch.

Pinaceae

407. *Abies concolor* /Gord./Engelm. 'Violacea '
 408. *Abies koreana* Wils.
 409. *Cedrus atlantica* Endl./ Manetti
 410. *Larix gmelinii* /Rupr./ Rupr.
 411. *Larix gmelinii* /Rupr./ Rupr. var. *olgensis* /A. Henry /Ostenf. & Syrach
 412. *Larix kaempferi* /Lamb./ Carr.
 413. *Picea abies* /L./ Karst
 414. *Picea alcoquiana* /Veitch ex Lindl./ Carr.
 415. *Picea meyeri* Rehd. & Wils.
 416. *Picea orientalis* /L./Link
 417. *Picea schrenkiana* Fisch. & C. A. Mey.
 418. *Picea wilsonii* Mast.
 419. *Pinus armandii* Franch.
 420. *Pinus bungeana* Zucc. ex Endl.
 421. *Pinus densiflora* Sieb. & Zucc.
 422. *Pinus flexilis* James
 423. *Pinus nigra* Arnold var. *caramanica* /Loudon/ Rehd.
 424. *Pinus nigra* Arnold. 'Fastigiata'
 425. *Pinus ponderosa* C. Lawson var. *scopulorum* Engelm.
 426. *Pinus strobus* L. 'Contorta'
 427. *Pinus sylvestris* L.
 428. *Pinus tabuliformis* Carr.
 429. *Pinus wallichiana* A. B. Jacks.
 430. *Pseudotsuga menziesii* /Mirb./ Franco
 431. *Tsuga canadensis* /L./ Carr.
 432. *Tsuga diversifolia* /Maxim./ Mast.
 433. *Tsuga sieboldii* Carr.

Ranunculaceae

434. *Clematis heracleifolia* DC.
 435. *Clematis tangutica* Korsh.
 436. *Clematis texensis* Buckl.

Rhamnaceae

437. *Paliurus spina-christi* Mill.
 438. *Rhamnus globosa* Bge.
 439. *Rhamnus japonica* Maxim.
 440. *Ziziphus jujuba* Mill. var. *inermis* /Bge./Rehd.

Rosaceae

441. *Aflatusia ulmifolia* /Franch./Vassilcz.
 442. *Aronia arbutifolia* /L./ Pers.

443. *Aronia prunifolia* /Marsh./Rehd.
444. *Cotoneaster acutifolius* Turcz.
445. *Cotoneaster adpressus* Bois
446. *Cotoneaster amoenus* Wils.
447. *Cotoneaster bullatus* Bois.
448. *Cotoneaster buxifolius* Wall. ex Lindl.
449. *Cotoneaster congestus* Baker
450. *Cotoneaster conspicuus* Comber ex C.Marquand & G.Klotz
451. *Cotoneaster dammeri* Schneid.
452. *Cotoneaster dielsianus* E. Pritz.
453. *Cotoneaster divaricatus* Rehd. & Wils.
454. *Cotoneaster foveolatus* Rehd. & Wils.
455. *Cotoneaster franchetii* Bois
456. *Cotoneaster frigidus* Wall. ex Lindl.
457. *Cotoneaster harrismithii* Flinck & Hylmö
458. *Cotoneaster horizontalis* Decne.
459. *Cotoneaster horizontalis* Decne. 'Saxatilis'
460. *Cotoneaster hupehensis* Rehd. & Wils.
461. *Cotoneaster insignis* Pojark.
462. *Cotoneaster lucidus* Schtdl.
463. *Cotoneaster microphyllus* Wall. ex Lindl. var. *thymifolius* Koehne
464. *Cotoneaster multiflorus* Bge.
465. *Cotoneaster niger* /Wahlb./ Fr.
466. *Cotoneaster nitens* Rehd. & Wils. in Sargent
467. *Cotoneaster obscurus* Rehd. & Wils.
468. *Cotoneaster pannosus* Franch.
469. *Cotoneaster racemiflorus* /Desf./ J. R. Booth ex Bosse
470. *Cotoneaster racemiflorus* /Desf./ J. R. Booth ex Bosse var. *veitchii* Rehd. & Wils.
471. *Cotoneaster salicifolius* Franch.
472. *Cotoneaster sikangensis* Flinck & B. Hylmö
473. *Cotoneaster wardii* W. W. Sm.
474. *Cotoneaster zabelii* Schneid.
475. *Crataegus flabellata* /Bosc ex Spach/ K. Koch
476. *Crataegus chlorosarca* Maxim.
477. *Crataegus intricata* Lange
478. *Crataegus kansuensis* Wils.
479. *Crataegus* × *lavallei* Hérincq ex Lavallée
480. *Crataegus lobata* Bosc.
481. *Crataegus maximowiczii* Schneid.
482. *Crataegus monogyna* Jacq.
483. *Crataegus orientalis* Pall. ex M. Bieb. var. *sanguinea* Loud.
484. *Crataegus pedicellata* Sarg.
485. *Crataegus pentagyna* Waldst. & Kit. ex Willd.
486. *Crataegus pinnatifida* Bge
487. *Crataegus pinnatifida* Bge. var. *major* N. E. Br.
488. *Crataegus sanguinea* Pall.
489. *Crataegus succulenta* Schrad. ex Link
490. *Crataegus wattiana* Hemsl. & Lace
491. *Cydonia oblonga* Mill.
492. *Exochorda giraldii* Hesse
493. *Exochorda korolkowii* Lav.
494. *Exochorda* × *macrantha* /Lemoine/ Schneid.
495. *Exochorda* × *macrantha* /Lemoine/ Schneid. 'The Bridge'
496. *Exochorda serratifolia* S.Moore
497. *Holodiscus discolor* /Pursh/ Maxim.
498. *Chaenomeles cathayensis* /Hemsl./ Schneid.
499. *Chaenomeles japonica* /Thunb./ Lindl. ex Spach.
500. *Chaenomeles* × *superba* /Frahm/ Rehd.
501. *Malus baccata* /L./ Borkh.
502. *Malus baccata* /L./ Borkh. 'Pendula'
503. *Malus baccata* /L./ Borkh. var. *mandshurica* /Maxim./ Schneid.
504. *Malus coronaria* /L./ Mill.
505. *Malus domestica* Borkh.
506. *Malus floribunda* Sieb. ex Van Houtte
507. *Malus halliana* Koehne
508. *Malus hupehensis* /Pamp./ Rehd.
509. *Malus kirghisorum* Al. Fed. & Fed.
510. *Malus* × *micromalus* Makino
511. *Malus prunifolia* /Willd./ Borkh.
512. *Malus* × *robusta* /Carr./ Rehd.
513. *Malus rockii* Rehd.
514. *Malus sargentii* Rehd.
515. *Malus sieboldii* /Reg./ Rehd.
516. *Malus spectabilis* /Aiton/ Borkh.
517. *Malus* × *sublobata* /Dippel/ Rehd.
518. *Malus toringoides* /Rehd./ Hughes
519. *Malus* × *zumi* /Matsum./ Rehd.
520. *Malus* × *zumi* /Matsum./ Rehd. 'Golden Hornet'
521. *Mespilus germanica* L.
522. *Padus asiatica* Kom.
523. *Padus maackii* (Rupr.) Kom.
524. *Padus racemosa* Lam.
525. *Padus virginiana* /L./ P. Mill.
526. *Photinia villosa* /Thunb./ DC.
527. *Physocarpus opulifolius* /L./ Maxim.
528. *Physocarpus ribesifolius* Kom.
529. *Prinsepia sinensis* /Oliv./ Oliv. ex Bean.
530. *Prinsepia uniflora* Batalin.
531. *Prunus cerasifera* Ehrh. var. *divaricata* /Ledeb./ L. H. Baile
532. *Prunus laurocerasus* L.
533. *Prunus laurocerasus* L. 'Camelliifolia'
534. *Prunus laurocerasus* L. 'Magnoliifolia'
535. *Prunus laurocerasus* L. /treelike habitus/
536. *Prunus subhirtella* Miq. var. *pendula* Y. Tanaka
537. *Prunus tomentosa* Thunb.
538. *Pseudocydonia sinensis* Schneid.
539. *Pyracantha coccinea* M. Roem.
540. *Pyracantha coccinea* M. Roem. 'Soleil d'Or'
541. *Pyrus betulifolia* Bge
542. *Pyrus calleryana* Decne. var. *dimorphophylla* /Makino/ Koidz.
543. *Pyrus communis* L.
544. *Pyrus elaeagrifolia* Pall.
545. *Pyrus salicifolia* Pall.
546. *Pyrus ussuriensis* Maxim.
547. *Pyrus ussuriensis* Maxim. var. *ovoidea* /Rehd./ Rehd.
548. *Rhodotypos scandens* /Thunb./ Makino
549. *Rosa canina* L.
550. *Rosa* × *damascena* Mill.
551. *Rosa davidii* Crép.
552. *Rosa davurica* Pall.
553. *Rosa eglanteria* L.
554. *Rosa helenae* Rehd. & Wils.
555. *Rosa jundzillii* Besser
556. *Rosa multiflora* Thunb.
557. *Rosa* × *hybrida* 'Complicata'
558. *Rosa multiflora* Thunb. 'Inermis'
559. *Rosa pimpinellifolia* L.
560. *Rosa rugosa* Thunb.
561. *Rosa* × *rugotida* Darthuis
562. *Rosa omeiensis* Rolfe f. *pteracantha* /Franch./ Rehd. & Wils.
563. *Rosa spinosissima* L.
564. *Rosa virginiana* Herrm.
565. *Rosa willmottiae* Hemsl.
566. *Rubus illecebrosus* Focke
567. *Sorbaria arborea* Schneid.
568. *Sorbaria sorbifolia* /L./ A. Braun var. *stellipila* Maxim.
569. *Sorbaria tomentosa* /Lindl./ Rehd.
570. *Sorbus americana* Marshall
571. *Sorbus aria* /L./ Crantz
572. *Sorbus* × *arnoldiana* Schouten

573. *Sorbus danubialis* /Jáv./Prodan
 574. *Sorbus decora* /Sarg./ Schneid.
 575. *Sorbus hybrida* L.
 576. *Sorbus intermedia* /Ehrh./ Pers.
 577. *Sorbus latifolia* /Lam./ Pers.
 578. *Sorbus minima* /Ley/ Hedl.
 579. *Sorbus mougeotii* Soy.-Will. & Godr.
 580. *Sorbus pohuashanensis* /Hance/Hedl.
 581. *Sorbus randaiensis* /Hayata/Koidz.
 582. *Sorbus reflexipetala* Koehne
 583. *Sorbus sudetica* /Tausch/ Fritsch
 584. *Sorbus* × *thuringiaca* /Ilse/Fritsch
585. *Spiraea blumei* G. Don.
 586. *Spiraea chamaedryfolia* L. var. *ulmifolia* /Scop./Maxim.
 587. *Spiraea henryi* Hemsl.
 588. *Spiraea chinensis* Maxim.
 589. *Spiraea japonica* L.f.
 590. *Spiraea media* Schmidt
 591. *Spiraea miyabei* Koidz.
 592. *Spiraea nipponica* Maxim.
 593. *Spiraea nipponica* Maxim. var. *tosaensis* /Yatabe/ Makino
 594. *Spiraea salicifolia* L.
 595. *Spiraea thunbergii* Sieb. ex Bl.
 596. *Spiraea trichocarpa* Nakai
 597. *Spiraea trilobata* L.
 598. *Spiraea veitchii* Hemsl.
 599. *Stranvaesia davidiana* Decne.
 600. *Stranvaesia davidiana* Decne. var. *undulata* (Decne.) Rehder & E. H. Wilson
 601. *Stranvaesia davidiana* Decne. var. *undulata* (Decne.) Rehder & E. H. Wilson 'Lutea'
 602. *Stephanandra incisa* /Thunb./ Zabel
 603. *Stephanandra tanakae* /Franch. & Sav./ Franch. & Sav.

Ruscaceae

604. *Ruscus aculeatus* L.
 605. *Ruscus hypoglossum* L.

Rutaceae

606. *Euodia daniellii* /Benn./ Hemsl.
 607. *Euodia hupehensis* Dode
 608. *Phellodendron amurense* Rupr.
 609. *Poncirus trifoliata* /L./ Raf.
 610. *Ptelea baldwinii* Torr. & A. Gray.
 611. *Ptelea trifoliata* L.
 612. *Ruta graveolens* L. 'Variegata'
 613. *Skimmia japonica* Thunb.
 614. *Skimmia japonica* Thunb. 'Rubella'

615. *Skimmia reevesiana* /Fort./ Fort.
 616. *Zanthoxylum schinifolium* Sieb. & Zucc.
 617. *Zanthoxylum simulans* Hance.

Sapindaceae

618. *Koelreuteria paniculata* Laxm. var. *apiculata* /Rehd. & Wils./ Rehd.
 619. *Xanthoceras sorbifolium* Bge.

Simaroubaceae

620. *Ailanthus altissima* /Mill./ Swingle

Solanaceae

621. *Lycium chinense* Mill.
 622. *Solanum dulcamara* L.

Staphyleaceae

623. *Staphylea colchica* Stev.
 624. *Staphylea* × *elegans* Zab.
 625. *Staphylea pinnata* L.
 626. *Staphylea trifolia* L.

Styracaceae

627. *Halesia carolina* L.
 628. *Halesia tetraptera* Ellis var. *monticola* /Rehd./ Reveal & Seldin
 629. *Pterostyrax corymbosa* Sieb. & Zucc.
 630. *Styrax japonicus* Sieb. & Zucc.
 631. *Styrax obassia* Sieb. & Zucc.

Taxaceae

632. *Taxus cuspidata* Sieb. & Zucc.

Ulmaceae

633. *Ulmus parvifolia* Jacq.

Verbenaceae

634. *Callicarpa bodinieri* Lévl.
 635. *Callicarpa dichotoma* /Lour./ K. Koch
 636. *Callicarpa dichotoma* /Lour./ K. Koch 'Albifructus'
 637. *Callicarpa japonica* Thunb.
 638. *Callicarpa* × *shirasawana* Mak.

Vitaceae

639. *Ampelopsis brevipedunculata* /Maxim./ Trautv.
 640. *Ampelopsis japonica* /Thunb./ Makino
 641. *Parthenocissus tricuspidata* /Sieb. & Zucc./ Planch.
 642. *Vitis amurensis* Rupr.